



Where to Walk in Charles County, Maryland



**Created with Input from the
Walk Charles County
Work Group**

**"Walk Charles County" Logo Created By
Kritchanan Yampai**

Bensville Park



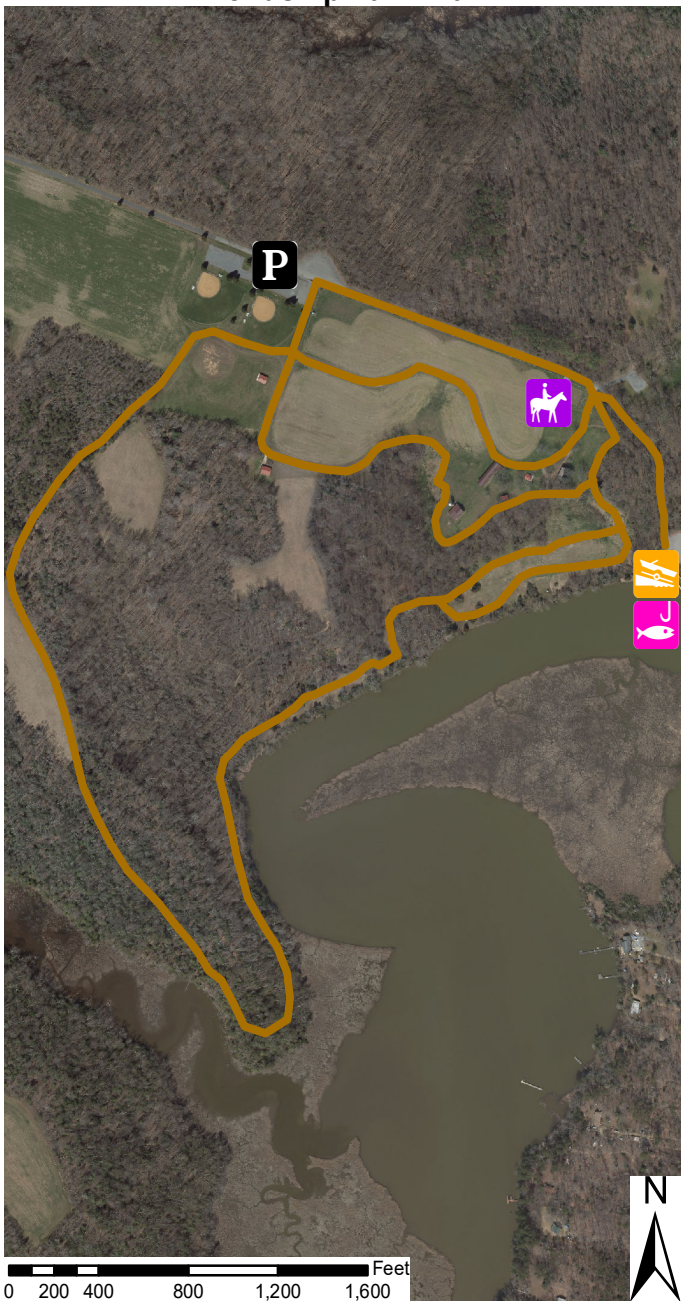
Park Info: Bensville Park is located off of Bensville Road just north of the Indian Head Rail Trail in Bensville and offers a paved path connecting to the Rail Trail at mile marker 9, a playground, a picnic pavilion, and a softball field.

Chapman State Park



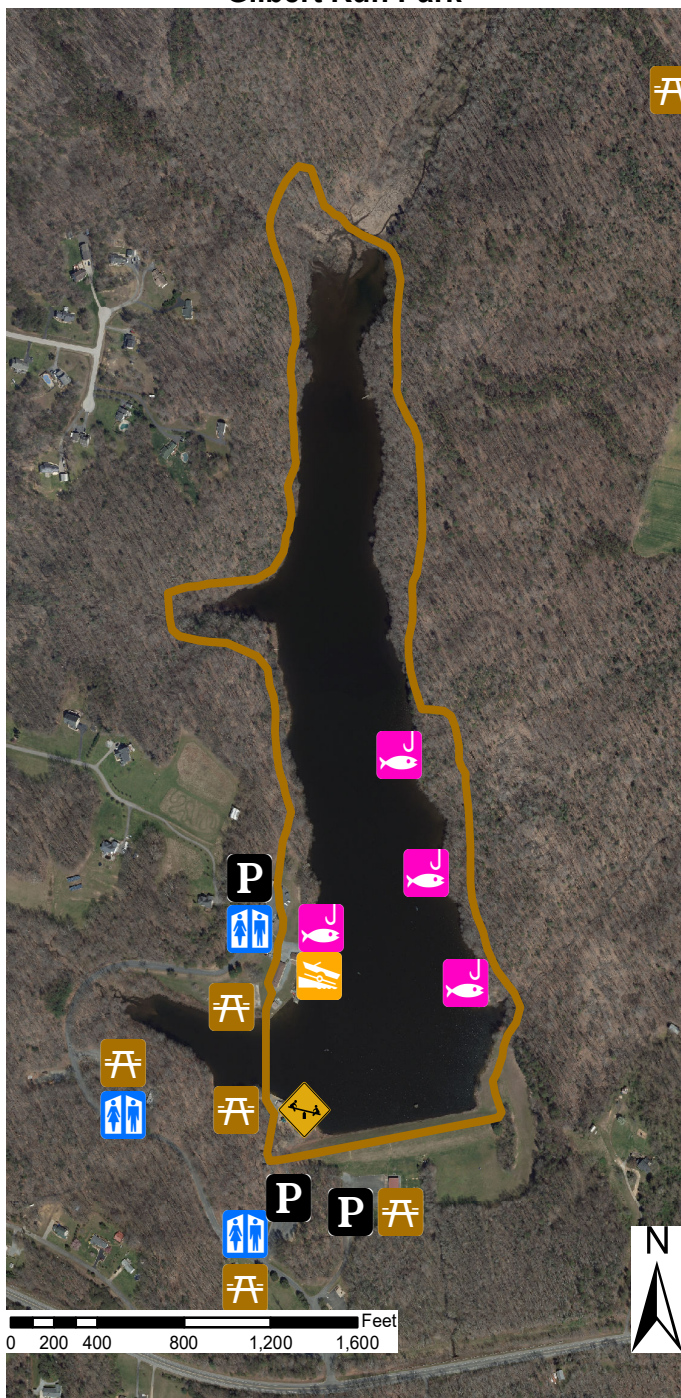
Park Info: Chapman State Park is located between Bryans Road and Indian Head and offers over 3 miles of natural surface trails, access to the Potomac River, and Mount Aventine, the Chapman family's historic home. Fishing is also permitted from the shore.

Friendship Farm Park



Park Info: Friendship Farm Park is adjacent to Nanjemoy Creek and offers over seven miles of walking trails accessing 382 acres of forest and agricultural fields. The park also includes wildlife observation decks, a boat ramp, and a fishing pier. Horses are allowed on portions of the trail from April to November.

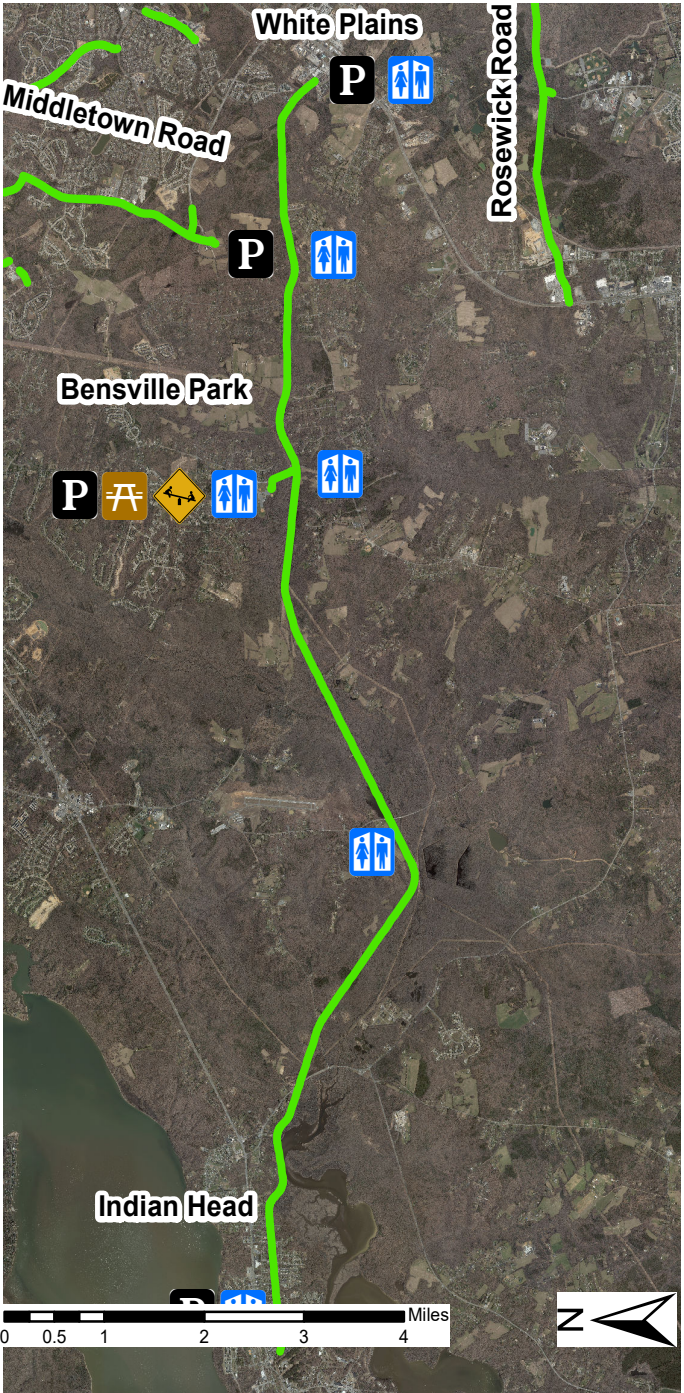
Gilbert Run Park



Park Info:

Gilbert Run Park near Dentsville offers access to Wheatley Lake and includes a 2 mile youth and dog-friendly walking trail, picnic areas, a large playground, a boat ramp (for electric motors only), and fishing piers (requires a freshwater license for anglers 16 and older).

Indian Head Rail Trail



Park Info: The Indian Head Rail Trail is a 13-mile long trail connecting White Plains and Indian Head. Built on an abandoned railroad corridor, the trail offers access to mature forests and natural wetlands, with wildlife viewing opportunities throughout. The trail is open to bicycles and pedestrians all year round.

Laurel Springs Regional Park



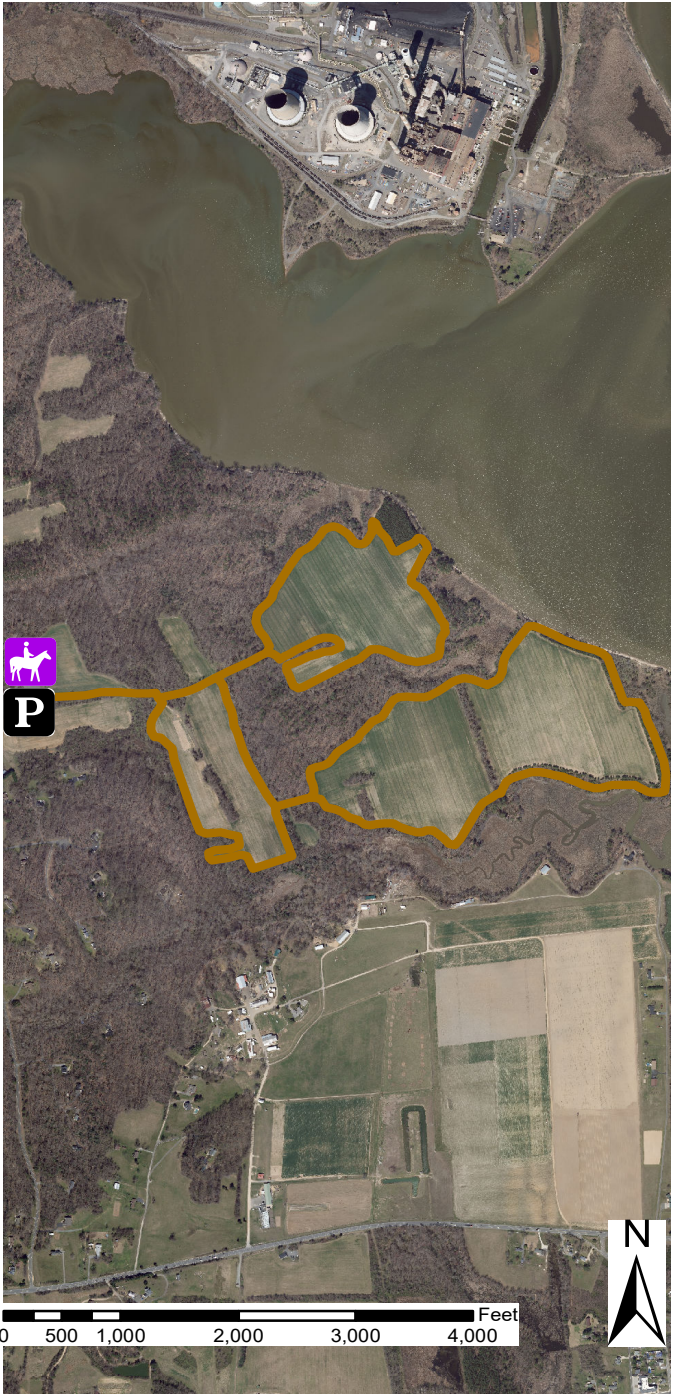
Park Info: Laurel Springs Regional Park near La Plata High School offers a 1.5 mile natural surface walking trail through the wooded perimeter of the park, small picnic pavilions and picnic benches, and a playground that has an emphasis on special needs play.

Mallows Bay Park



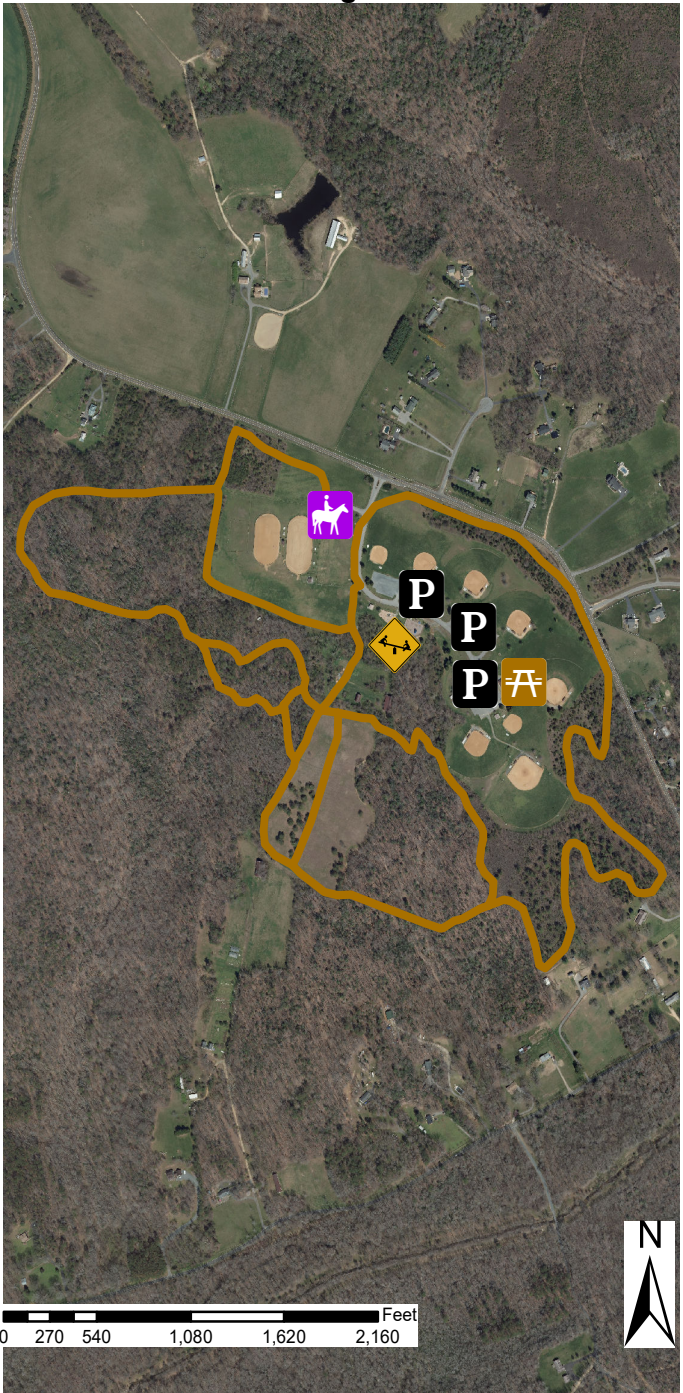
Park Info: Mallows Bay Park is adjacent to the Mallows Bay National Marine Sanctuary, providing access to the Sanctuary's collection of Civil War shipwrecks and Native American archaeological artifacts nearly 12,000 years old. The park's 0.7 mile walking trail includes informational signs on the site's history.

Maxwell Hall Park



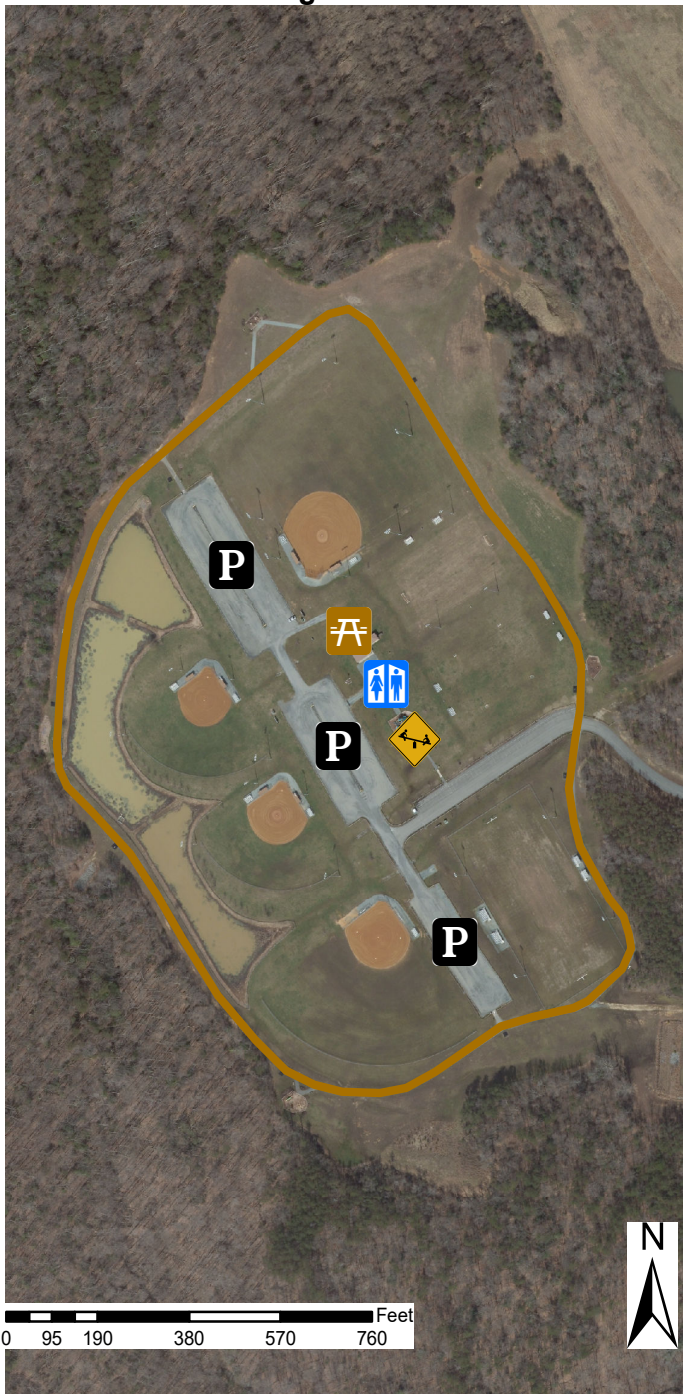
Park Info: Maxwell Hall Park near Benedict offers 14.2 miles of equestrian trails that are open to hikers. Trails access wooded areas, open fields, shoreline, steep terrain, and beach rest areas. Membership is required for equestrian.

Oak Ridge Park



Park Info: Oak Ridge Park is off of Oaks Road near Charlotte Hall and offers seven miles of equestrian trails that are open to hikers, a playground, a community field, and a picnic pavilion.

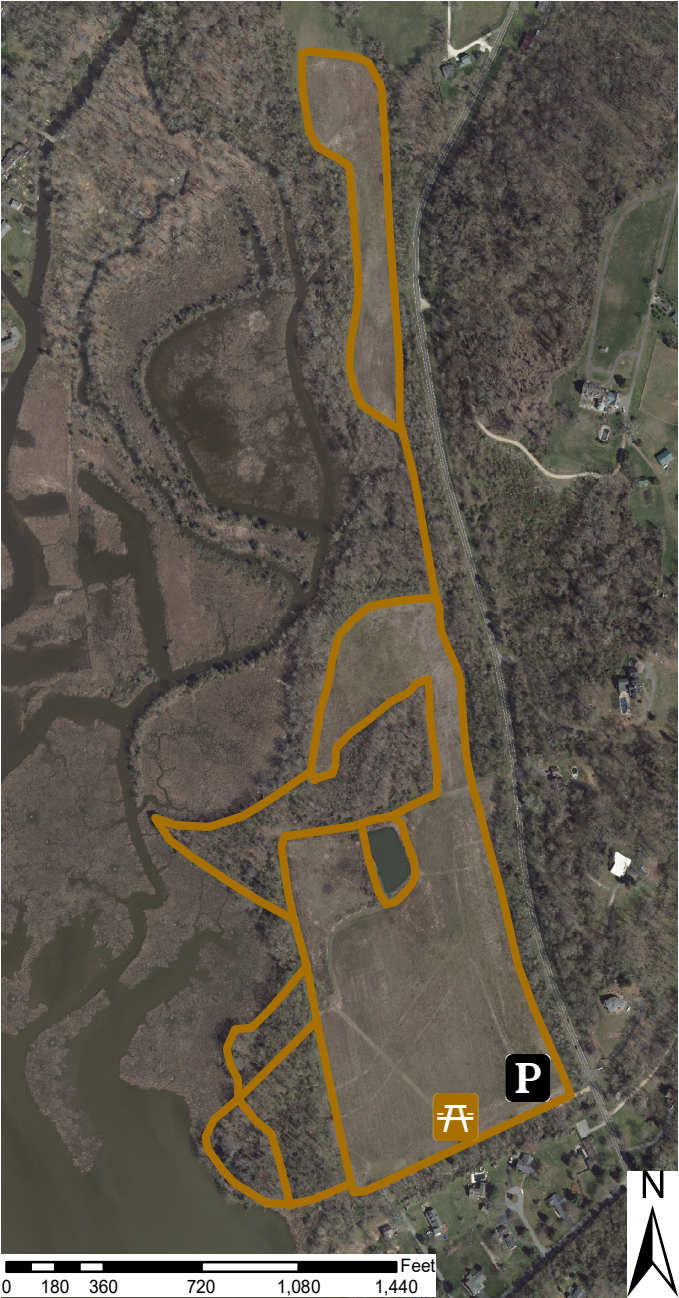
Pisgah Park



Park Info:

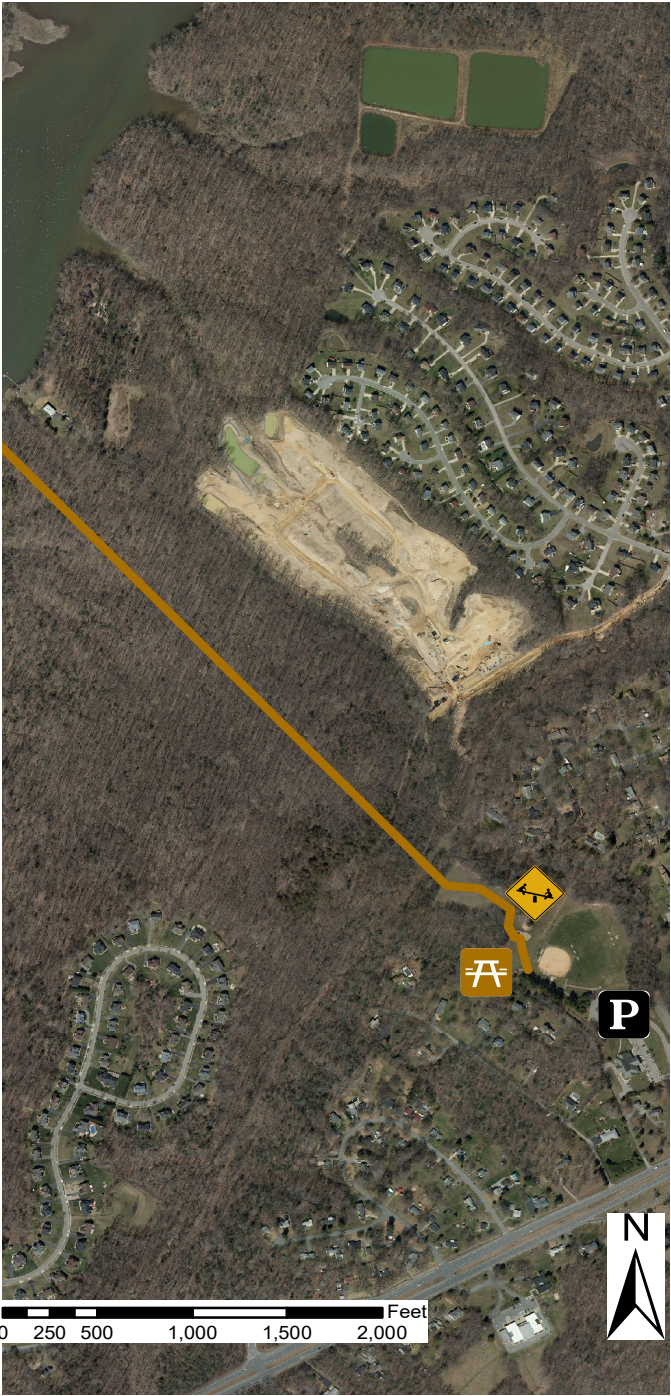
Pisgah Park is located on Mason Springs Road south of Poorhouse Road and offers a 0.75 mile walking and interpretive nature trail, a softball field for drop-in use, a picnic pavilion, and a playground.

Port Tobacco River Park



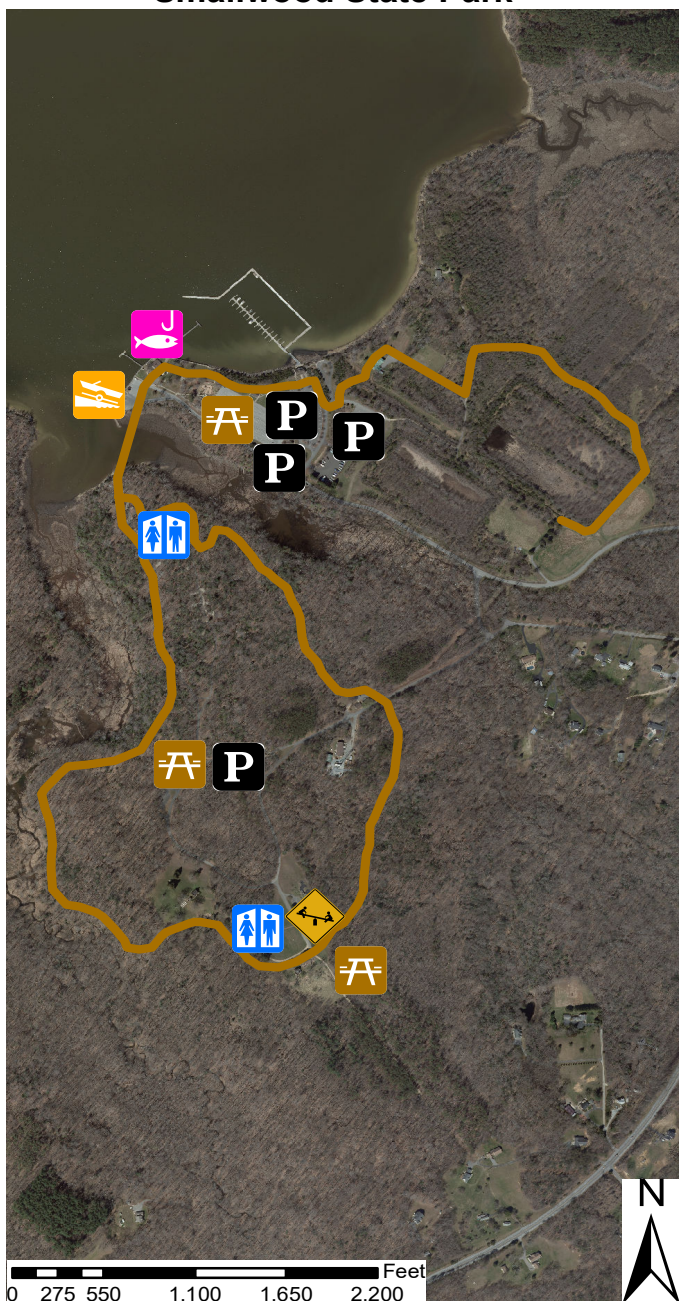
Park Info: The Port Tobacco River Park (also called the Tom Roland Natural Resource Area) is a riverside park adjacent to the Port Tobacco River that offers 3 miles of natural surface walking trails, wildlife viewing opportunities, and a picnic grove.

Ruth B. Swann Memorial Park



Park Info: Ruth B. Swann Memorial Park offers a one mile walking trail that provides access to the Potomac River through mature woodlands.

Smallwood State Park



Park Info:

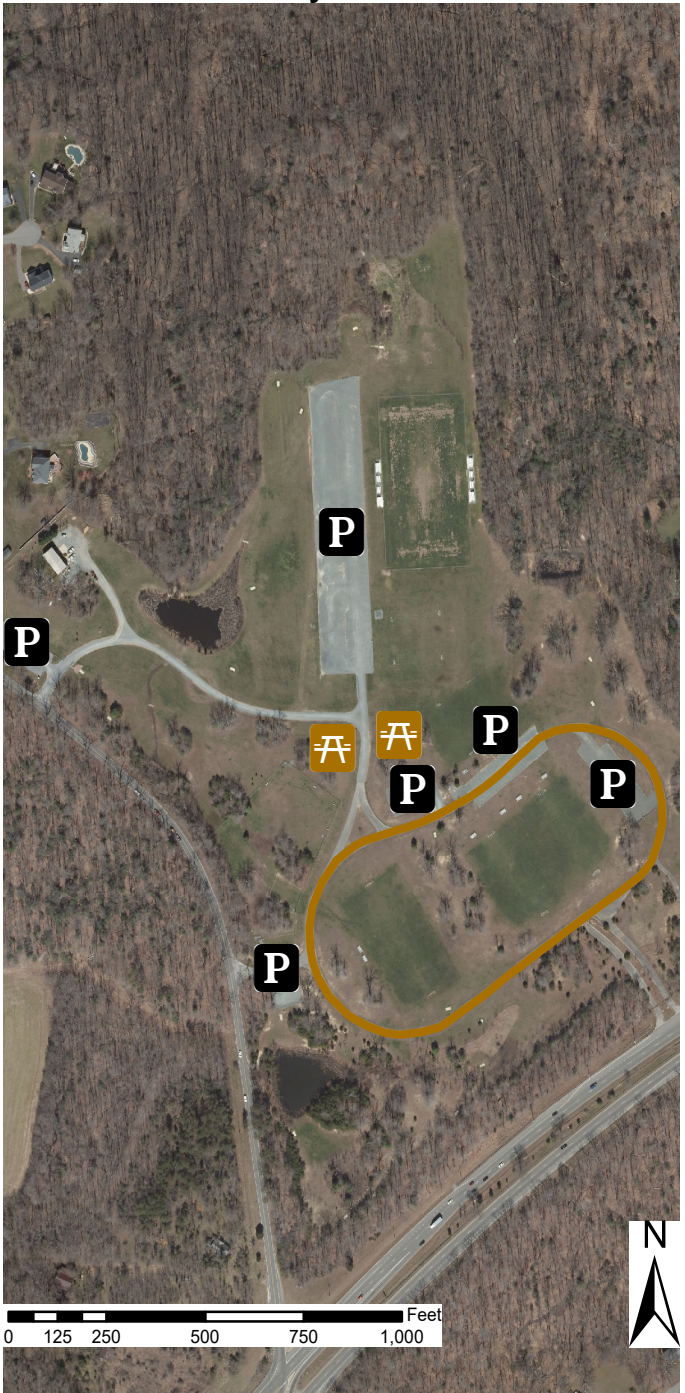
Smallwood State Park is a 628 acre park on the Mattawoman Creek that includes two walking trails accessing hardwood forest, tidal wetlands, and meadow. The park is named after General William Smallwood, a Charles County native.

Tilghman Lake Park



Park Info: Tilghman Lake Park near La Plata High School offers pastoral views of Tilghman Lake, a 1 mile natural surface walking trail around the lake that connects to Laurel Springs Regional Park, a picnic pavilion, and a fishing pier.

Turkey Hill Park



Park Info: Turkey Hill Park is a 70 acre park located at the intersection of Turkey Hill Road and U.S. Route 301 and offers a 0.5 mile natural surface oval pathway, picnic areas, an enclosed dog park for off-leash canine enjoyment, and an 18-hole disc golf course.